



Warning Decal

571.D126  
8.5"x18"

**\$6.50**



Gloves

571.G2003L  
Leather palm reflective gloves, large.

**\$7.00**



Safety Vest

FLTSIVESTXL  
Polyester, class 2 type R, zipper, x-large.

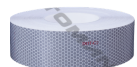
**\$5.00**



Document Holder

5201103  
Aluminum clipboard document holder.

**\$17.00**



DOT Tape

571.CT0703  
Solid white hexagonal pattern, 150"x2", 7 year.

**\$79.50**



Warning Decal

571.D115  
11.75"x17.25"

**\$6.50**



Gloves

571.G2003XL  
Leather palm reflective gloves, x-large.

**\$7.00**



Safety Vest

FLTSIVESTXXL  
Polyester, class 2 type R, zipper, xx-large.

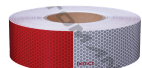
**\$5.00**



Triangle Reflectors

2204891C1  
Set of 3.

**\$27.50**



DOT Tape

571.CT0702  
Red/white hexagonal pattern, 150"x2", 7 year.

**\$79.50**



Caution Decal

571.D121  
11.75"x17.25"

**\$6.50**



Gloves

571.G2005L  
Premium grade cow grain leather driver gloves, unlined, large.

**\$13.00**



Safety Glasses

FLTSIOTSSFGLS2  
Polycarbonate, clear, ANSI Z87 rating.

**\$4.00**



Hard Hat

571.HM9  
Hi-Vis orange, 4-point suspension, type I, class G&E, (white 571.HM3 and yellow 571.HM1-same price).

**\$10.50**



Construction Decal

571.D116  
11.75"x17.25"

**\$6.50**



Gloves

571.G2005XL  
Premium grade cow grain leather driver gloves, unlined, x-large.

**\$13.00**



Traffic Cone

FLTSICN28  
Low density poly plastic, 80% of the cone's weight in the base, 28".

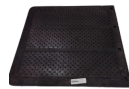
**\$23.50**



Mud Flap

UPTGT2424D  
Thick rubber flap, 24"Wx24"L, 1/4" thick, (also available in 30"L).

**\$6.79**



Mud Flap

UPTGT2424HDD  
Thick rubber flap, 24"Wx24"L, 1/2" thick, (also available in 30"L).

**\$9.79**

**Custom Logo Flaps**  
Raised Custom Logo Rubber Mud Flaps  
Available in multiple colors  
Logo & Sizes 1/4", 3/8", and 1/2"  
Minimum quantity order of 50!  
**CALL SALESMAN FOR QUOTE!**



Hub Pilot

157.A225X825HP  
Bright mirror finish on both sides, load rate of 7,827 lbs., 22.500"x8.250".

**\$269.00**



Hub Pilot

157.A245X825HP  
Bright mirror finish on both sides, load rate of 8,047 lbs., 24.500"x8.250".

**\$289.00**



Hub Pilot

157.L225X825HP  
White powder coated, 2 hand holes, 5 hand hole available at same price (157.L225X825HP-5HH), 22.500"x8.250".

**\$120.00**



Hub Pilot

157.L225X825HPX  
Black powder coated, 2 hand holes, 5 hand hole available at same price (157.L225X825HPX-5HH), 22.500"x8.250".

**\$125.00**



Black Mesh Tarp

573.TBM84X22  
Brass grommets, reinforced side hems, 7"x22".

**\$99.99**



Black Mesh Tarp

573.TBM84X20  
Brass grommets, reinforced side hems, 7"x20".

**\$96.99**



Asphalt Lumite Tarp

573.TAL84X22  
Brass grommets, reinforced side hems, 7"x22".

**\$102.99**



Asphalt Lumite Tarp

573.TAL84X20  
Brass grommets, reinforced side hems, 7"x20".

**\$98.99**



Solid Vinyl Tarp

573.TSV84X22  
Brass grommets, reinforced side hems, 7"x22".

**\$118.99**



Solid Vinyl Tarp

573.TSV84X20  
Brass grommets, reinforced side hems, 7"x20".

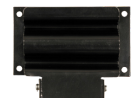
**\$112.99**



Mesh Tarp

1801459  
Shur-co heavy duty mesh, 7"x22".

**\$142.99**



Shovel Holder

SH675  
Buyers Products shovel holder mounts to the side of your truck, black powder coated carbon steel.

**\$22.50**



Shovel Holder

SH675SS  
Buyers Products shovel holder mounts to the side of your truck, stainless steel.

**\$34.50**



Tarp System

5545300  
Buyers Products 14-23' aluminum tarp kit, tarp sold separately.

**\$1,350.00**



Folding Step

FS2797CH  
Buyers Products large HD folding step, cast aluminum.

**\$83.50**



Cable Truck Step

5231212  
Buyers Products black powder coated cable type truck steps.

**\$113.50**



Tailgate Latch Assembly

TGL3410ST  
Steel with forged brackets and clevis.

**\$39.99**



Tailgate Latch Assembly

TGL34SBR  
Steel latch assembly for tailgate latch.

**\$27.49**



Tailgate Latch Assembly

TGL3410SS  
Stainless steel with bracket and clevis.

**\$99.49**



Tailgate Chain Latch

CL375  
Provides a latching point for a chain.

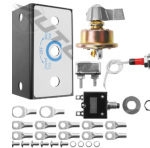
**\$6.99**



Back Up Alarm

FLTBUA12V  
Feature a ABS, waterproof construction, stainless terminals, 12V, 97 decibels.

**\$20.07**



Rotary Reversing Tarp Switch Kit

577.3063K  
DPDT, 3 position on/off/momentary on switch.

**\$41.74**



Tarp Rocker Switch & Solenoid Kit

577.3062K  
Includes motor reversing solenoid, cover, panel, momentary rocker switch, 50A breaker, and wire terminals.

**\$66.29**



Dump Body-Up Indicator Kit

52-635BP  
Packard weather pack, conn 12V10A 20 harness with buzzer indicator light, water resistant.

**\$56.03**



Air Valve

BAV010  
Manual air valve, 4-way, 2-position, 5-1/8" NPT ports.

**\$27.36**



Banjo Eye  
TGBE3138  
For 3/8" chain, carbon steel.

**\$6.49**



Yoke End  
B27087BB  
Adjustable, 5/8-18 NF thread and 1/2" diameter thru-hole.

**\$9.49**



Yoke End  
B270810C  
Adjustable, straight, 5/8-18 NF thread, 5/8" diameter thru-hole.

**\$10.99**



Pintle Hook  
P45AC4K  
Air compensated, 45 ton, 4 bolt mounting holes, (6 bolt available P45AC6K).

**\$319.99**



Pintle Hook  
BP200  
Swivel type, 25 ton, forged steel, loads up to 50,000 lbs.

**\$198.99**



Pressure Regulator

6451025  
Has a locking knob and is rated to 300 PSI inlet pressure. Includes 2-1/8" NPTF work ports, 2-1/8" gauge ports, and 2 plugs.

**\$36.83**



Air Valve  
6451030  
Toggle style air valve, 4-way, 2-position, rated at 150 PSI and commonly used with lift axle controllers.

**\$34.31**

Push-Pull Switch

BSW050  
Can be mounted in dashboard or consoles, designed to operate tailgate solenoid valves.

**\$12.83**



Lift Axle Control Assembly w/Toggle Air Valve

6451051  
Provides in-cab control for air suspension and lift axle, comes pre-plumbed and assembled, includes fittings/tubing and mounting plate.

**\$165.43**



Tailgate Cylinder Kit

TGC25006VSPK  
Tie rod style cylinder complete install kit, clevis mount, .75" rod, 6" stroke, 2.5" bore.

**\$212.49**



Tailgate Cylinder Kit

TGC25008VSPK  
Tie rod style cylinder complete install kit, clevis mount, .75" rod, 8" stroke, 2.5" bore.

**\$209.49**



Tailgate Cylinder Kit

TGC32506VSPK  
Tie rod style cylinder complete install kit, clevis mount, 1" rod, 6" stroke, 3.25" bore.

**\$232.49**



Tailgate Cylinder Kit

TGC32508VSPK  
Tie rod style cylinder complete install kit, clevis mount, 1" rod, 8" stroke, 3.25" bore.

**\$238.49**



Tailgate Cylinder

TGC25006V  
Tie rod style cylinder, clevis mount, .75" rod, 6" stroke, 2.5" bore, cylinder only.

**\$89.49**



Tailgate Cylinder

TGC25008V  
Tie rod style cylinder, clevis mount, .75" rod, 8" stroke, 2.5" bore, cylinder only.

**\$89.99**



Tailgate Cylinder

TGC32506V  
Tie rod style cylinder, clevis mount, 1" rod, 6" stroke, 3.25" bore, cylinder only.

**\$106.99**



Tailgate Cylinder

TGC32508V  
Tie rod style cylinder, clevis mount, 1" rod, 8" stroke, 3.25" bore, cylinder only.

**\$122.99**



Drawbar

BDB1385  
Forged 4 bolt mount with pintle hitches, 4" ID.

**\$97.49**



Dump Body Vibrator

DBV35001  
3500 lb. of force, vibrator only, (install kit #3010636).

**\$669.99**



Light

TL6050  
Stop/turn/tail, LED, red, oval, 24 diode, 12V, PL-3.

**\$19.81**



Light

TL6050A  
Park/front/turn, LED, yellow, oval, 24 diode, 12V, PL-3.

**\$19.84**



Light

FLTSTTBU40014RW  
Brake/tail/turn, LED, 4" red/clear. 14 diodes, 7.5-14 VDC.

**\$19.52**



Light

TL4050  
Stop/turn/tail, LED, red round, 24 diode, 12V, PL-3.

**\$15.69**



Tail Light

FLTSTTBU60014RW  
LED, 6", 14 diodes, 7.5-14 VDC, red/clear, oval.

**\$19.52**



Marker Light

TL1050  
Signal stat, LED, red round, 6 diode, 12V, PL-10, P2.

**\$5.73**



Marker Light

TL1050A  
Signal stat, LED, amber round, 6 diode, 12V, PL-10, P2.

**\$5.63**



Back-Up Light

TL60204C  
60 series, clear oval, 1 bulb, 12V, PL-2.

**\$8.44**



Back-Up Light

TL6060C  
Signal stat, LED, clear oval, 24 diode, 12V, PL-2.

**\$42.76**



Dump Body Vibrator

DBV25001  
2500 lb. of force, vibrator only, (install kit #3010636).

**\$469.99**



Grommet

TL60700  
Open back, black PVC, 60 series, 2"x6" lights.

**\$2.09**



Grommet

TL40700  
Open back, black PVC, 40/44 series, 4" lights.

**\$1.62**



Plug

TL94993  
Stop/turn/tail plug, 16 gauge GPT wire, 11", stripped end/ring terminal, right angle PL-3.

**\$1.80**