



# SELKING INTERNATIONAL TRUCKS

## SALE ENDS: MARCH 31, 2025



**Astro Pneumatic  
Deluxe Air Blow Gun**  
AST1716  
Comfortable lever control  
and insulated handle, 20"  
long angled nozzle.  
**\$14.00**



**Parts Washer**  
INT31200B  
Designed for fast, efficient  
cleaning of vehicle parts, 20  
gallon tank capacity, use with  
water-based cleaners.  
**\$363.56**



**Parts Washer**  
INT31400B  
Designed for fast, efficient  
cleaning of vehicle parts, 40  
gallon tank capacity, use with  
water-based cleaners.  
**\$580.00**



**Milwaukee Tool  
Wet/Dry Vac**  
MLW0970-20  
Most powerful small  
capacity 18V wet/dry vac,  
60% more suction, 2X  
quieter, 2.5 gallons.  
**\$253.92**



**Milwaukee Tool  
Tool Box**  
MLW48-22-8422  
Packout compact tool box.  
**\$83.60**



**Titan Magnetic Tray**  
TIT21265  
Rectangular, perfect for  
holding parts, hardware,  
and fasteners, 1-1/4 deep.  
**\$13.99**



**K Tool Work Light**  
KT173334XD  
Includes foldable  
magnetic leg, 500 lumen  
flashlight, designed with  
hanging hooks.  
**\$45.89**



**K Tool Work Light**  
KT173327XD  
360 Rotatable base,  
hanging hooks, 1500 to  
300 lumens.  
**\$58.83**



**Titan Magnetic Tray**  
TIT21263  
Rectangular, perfect for  
holding parts, hardware,  
and fasteners, 1" deep.  
**\$17.95**



**Spot and Flood  
Headlamp**  
STL61435  
USB rechargeable,  
200 lumens and 91m  
beam, 45-degree  
tilting head, water  
resistant.  
**\$56.20**



**Headlamp**  
WLMW2681  
High beam 500 lumens,  
2.5 hour run time, low  
beam 100 lumens, 10  
hour run time, USB-C  
charge cord included.  
**\$21.85**



**OTC S-cam Air  
Brake Spring Tool**  
OTC5081  
Used when replacing  
brake shoes on HD  
tractors and trailers.  
**\$113.85**



**OTC Jimmy Bar**  
OTC7421A  
Tempered to resist bending and  
breaking, 54" long, 1" diameter,  
lifetime warranty.  
**\$161.59**



**OTC Jimmy Bar**  
OTC7168  
Multitude of uses, 30"  
long, 7/8" diameter,  
lifetime warranty.  
**\$44.25**





# SELKING INTERNATIONAL TRUCKS



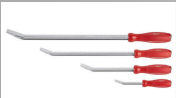
**GearWrench Mechanics Seat**  
KDT86994  
Air shock adjustable tractor seat, adjust 18" to 22" in height, 300 lbs. capacity, swivel.  
**\$155.75**



**Traxion Rolling Race Seat**  
TRX2-700R  
Large gear tray spins for easy access, 5" casters, adjustable seat.  
**\$211.50**



**K Tool Roller Seat**  
KTIXD74987  
Wide base, 300 lbs. capacity, 360 rotation wheels.  
**\$102.59**



**Milwaukee Tool Pry Bar Set**  
MLW48-22-9214  
All-metal core, 4-piece set, I-beam design.  
**\$66.76**



**Milwaukee Tool Hook & Pick Set**  
MLW48-22-9218  
All-metal core, 8-piece set, chrome plated.  
**\$48.45**



**OTC Pliers Set**  
OTC4510  
Hose pinch-off pliers, 3-piece set, shuts off flow through vacuum lines, fuel lines, coolant lines, etc.  
**\$83.15**



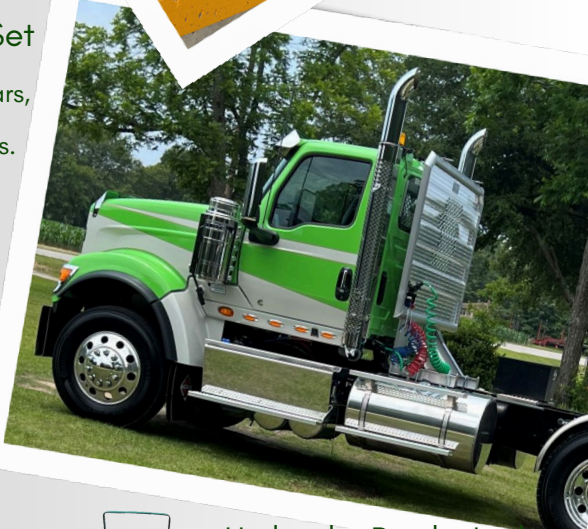
**Milwaukee Tool Pliers Kit**  
MLW48-22-3690  
Torque lock locking pliers, 10-piece.  
**\$148.05**



**OTC Pry Bar Set**  
OTC7175  
Indexing to 180 degrees, 14 locking positions for leverage, 3-piece set.  
**\$147.70**



**Mayhew Curved Pry Bar Set**  
MAY61366  
Set contains 5 pry bars, custom grip with strike-able end caps.  
**\$148.22**



**Milwaukee Tool Pliers Kit**  
MLW48-22-3695  
Torque lock locking pliers, 5-piece.  
**\$69.32**



**K Tool Jack Stands**  
KTIHD61222  
Pair of 22-ton capacity pin type jack stands with support range from 11.825"-19.75".  
**\$236.25**



**Jack Stands**  
FLTJS12T  
Both jacks incorporate a self-locking ratchet handle.  
**\$186.95**



**K Tool Truck Jack**  
KTI63197  
Air/hydraulic jack, 22 ton, 3 handle positions, release knob, welded pump.  
**\$447.44**



**Hydraulic Bottle Jack**  
FLTHBJ20T  
Welded steel construction, 20 ton.  
**\$90.36**